

SOLUTIONS

INTRALOGISTICS MADE EASY

Conveyors | Robotics | Automation | Software
Industrial Equipment | Turn-Key Projects



OUR HISTORY DEFINES US, AND GIVES A GLYMPSE FOR THE FUTURE

ESTABLISHED IN

IN VALE DE CAMBRA

MORE THAN

COLLABORATORS

ACTIVITIES IN

GEOGRAPHIES

Founded in 1994 in Vale de Cambra - Portugal, throughout the years, we've expanded our activities and installations always with a sustainable strategy and long term vision. From a electrics and automation service provider up to a worldwide player in the intralogistics sector, the journey has been challenging and gratifying.

THE FOUNDATION AND BEGINNING - 1994

Our history began in 1994, in Vale de Cambra, with one mission and purpose, to deliver the best services for electrification and automation for industries and partners. That was the starting point, but **the vision was much greater and aimed at growth and expansion** for the upcoming years, transforming a services company to a worldwide player in the intralogistics market.

This was only possible through the vision of our founder, **José Paulo Martins**, which envisioned a company that could transform and expand itself, it's activities, mission and vision throughout it's history



TRANSFORMATION AND EXPANSION - 1994 TO 2005

The next transformation the company had, was the expansion of it's activities, after years of experience with electrics, machinery and automation, the next step was to start a metalmechanics division. This step was determinant in the expansion and transformation the company would have in the upcoming years, has it was the point it begin to **manufacture their own solutions and added a new area of knowledge, mechanics.**

This transformation required a new stage for the company, because we had to purchase new manufacturing equipment, at the same time, we needed space to grow, therefore we had to move to a complete new facility and embrace the new activities, manufacturing.

Now we could develop and manufacture our own solutions and for that, we had to establish new processes, but most important than that, was the **creation of a new division: Research and Development.** This was a crucial step, as innovation was now part of our culture.

ACCREDITATION AND INTERNATIONALIZATION 2005 TO 2009

During our transformation and expansion, we knew we had to look and prepare for the future, to structure and to address the company towards the next period and outcome. **This was the starting point for the ISO 9001 certification and the first award the company had: SME Leader.**

This accreditation of the company, by it's ISO 9001 certification, was important, because it was the preparation for the upcoming and more demanding certifications we were aiming. Mostly for entering into new industries and to certify our management system and processes.

At the same time, we initiated the implementation of our long term vision and mission, the growth and expansion of our activities to other geographies - internacionalization. **This was a important milestone and would change the future of the company, as the brand and our solutions, were being implemented throughout Europe and África.**



AFFIRMATION AND GROWTH 2009 AND BEYOND

In 2009, we had a important milestone that would shape the future of our value proposition to the market, **the foundation of JPM Group.** This foundation had a important mission and goal, the professionalization of the company management, the expansion and verticalization of knowledge areas in individual companies.

JPM Industry was not the only company in the JPM Group, JPM Renewables joined the group with the mission to offer sustainable and renewable energy solutions for industries and later joined **Jointsteel** (a joint-venture with the belgian company Timmerman EHS), with the mission of manufacturing process equipment and solutions in stainless steel.

During this period, once again, we needed space to accomodate the growth, so we moved to a complete new facility, started to implement Lean methodologies and adding state-of-the-art machinery. Though this journey we achieve new certifications and awards, the most relevant ones, were the ISO 14001, ISO 18001, NP 4427 certifications and obviously the invitation and admission to the COTEC network.

It was **the affirmation of JPM Industry as a worldwide player in the intralogistics market and the start of a new activity, the factory of factories.** This is possible due to JPM Group, where we have individualized companies, that together and with third parties integration, can deliver a turn-key solution to our customers. More is to come, our vision doesn't stop here, but the journey has been challenging, demanding, rewarding and outstanding.

STATE OF THE ART ENGINEERING SOLUTIONS

SOLUTIONS FOR ALL INDUSTRIES

Our solutions are designed to answer to the challenges that a intralogistics environment offers, from industrial conveyors, sorters, robotic systems, automation, software, industrial equipment and machinery up to turn-key projects, combining all technologies and third parties integration.

Industries are the ecosystem where we perform, our solutions and services portfolio is available in Airport, Postal and Parcel, Manufacturing, Process and Warehouse industries and a dedicated team is focused in excellence and performance to drive your industry to success.

CONVEYORS

PLASTIC CHAIN

MODULAR PLASTIC CHAIN

METALLIC CHAIN

ROLLERS

BELT



We're specialized in designing, manufacturing and assembly of industrial conveyors for all types of industries. Using state of the art technologies, processes and machinery, **we're able to deliver the most reliable and performant industrial conveyors.**

Indispensable in today's industries, conveyors are responsible for the transportation of raw materials up to the finished products throughout the manufacturing process and up to their logistics.

Industries

Airports
Post & Parcel
Manufacturing
Process
Warehouse

Types

Plastic Chain
Modular Plastic Chain
Metallic Chain
Rollers
Belt

Our engineering design focus on using the most adequate materials to ensure the minimum wear, high energy efficiency and thus ensuring the highest cost-efficiency in the industry

Our portfolio offers a wide range of solutions and construction features, such like, **Plastic Chain, Modular Plastic Chain, Metallic Chain, Rollers or Belt**, manufactured in different types of materials, from stainless steel, aluminium up to carbon steel.

They can be found in all types of industries, from Airport, Postal and Parcel, Manufacturing, Process to Warehouse.

ROBOTICS

PALLETIZING
DEPALLETIZING
MANIPULATION
PICK&PLACE



We are a solution provider for robotics projects, we have in-house competences and know-how for project development, system integration, manufacturing and implementation of a robotics solution.

Robotics are used to increase the production capacity, availability, flexibility and the quality of a manufacturing process with reduced payback investment period.

Our solutions can be Depalletizing/Palletizing, Manipulation and Pick & Place applications or the complete integration in a machine ecosystem.

12,5t

Industries

Airports
Post & Parcel
Manufacturing
Process
Warehouse

Types

Palletizing
Depalletizing
Manipulation
Pick & Place

We can offer **from the design, manufacturing, implementation, installation, commissioning, maintenance up to remote assistance.**

They can be custom built or standardized solutions, focused in modularity and flexibility.

Our solutions can be found in all types of industries, like Manufacturing, Process, and Warehouse intralogistics applications.

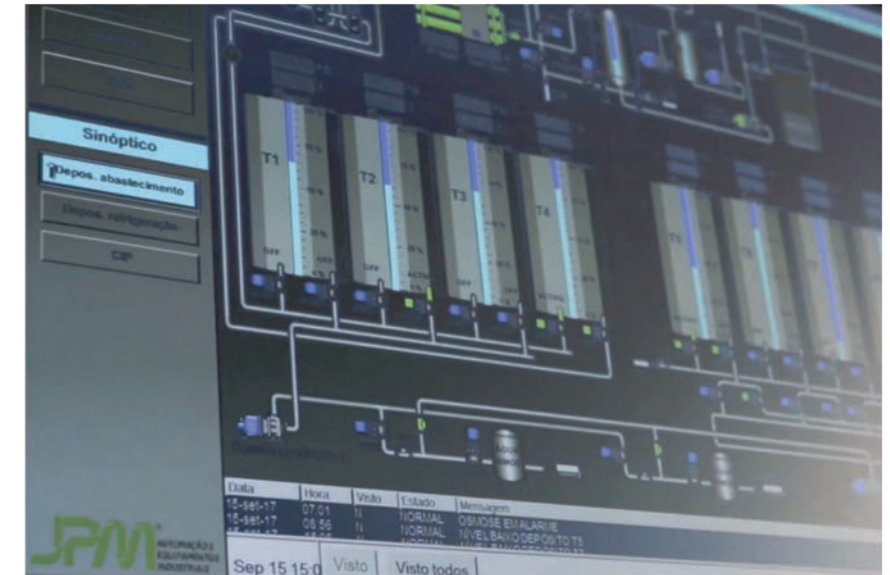
SOFTWARE

SUPER VISION

CONTROL

DATA ACQUISITION

HMI



Supervision and Control Systems / HMI (Human Machine Interface) allow the operators to interact with the production process.

Software and control devices are used to monitor and control industries critical parameters.

Industries

Airports
Post & Parcel
Manufacturing
Process
Warehouse

Types

Super Vision
Control
Data Acquisition
HMI

The programming of SCADA (Supervisory Control and Data Acquisition) is made to assure a friendly and intuitive usage, giving virtually anyone the chance to interact with the productions process.

These solutions allow the manufacturing process overview and control from a local workstation or remotely via GSM or Ethernet connection.

We're able to offer standardized or personalized solutions for your industry.

AUTOMATION

PLC TECHNOLOGIES

SENSORS

INSTRUMENTATION



Automation is one of our core competences and one of the most important areas of any industry, using PLC advanced technologies combined with sensors and instrumentation from the field, we aim to achieve gains in efficiency, productivity and thus increasing competitiveness of our customers industry.

From developing and designing the solution, to their execution and implementation, up to commissioning and maintenance.

Industries

Airports
Post & Parcel
Manufacturing
Process
Warehouse

Types

PLC Technologies
Sensors
Instrumentation

We offer consulting services and technical support to our customers.

These can be applied in an industrial environment or a machine ecosystem, where **we can fully automatize existing manufacturing processes or machine revamping.**

Acting as system integrator or a solution provider, we offer the solution for your needs.

INDUSTRIAL EQUIPMENT

CUSTOM BUILT
CUSTOM DESIGN



Engineering is the core competence of JPM Industry and we offer these skills to our customer to completely design and industrialize state of the art industrial equipment and machinery fitted to their needs and requirements.

These competences came from the knowledge acquired for **more than 20 years of automation, sensing, instrumentation, robotics, process and metal mechanics projects**, combining those in a unique project for a customized solution for your needs.

Industries
Airports
Post & Parcel
Manufacturing
Process
Warehouse

These industrial equipment's can be simple or complex, combining few or several technologies and **we support our customers from the industrial design, industrialization, installation, commissioning up to the maintenance and spare parts.**

These solutions are custom built and designed according to the manufacturing process with the goal to increase availability, efficiency and productivity.

TURN-KEY

COMBINING SOLUTIONS FROM A TO Z



Turn-key solutions are **solutions that will cover all our customer needs, combining all the equipment's and technologies** that make part of our portfolio but as well, integration of third parties equipment's, systems or solutions.

We combine not only JPM Industry portfolio, but as well, the sister companies inside JPM Group. This mean, process equipment and technologies from Jointsteel and renewable energy solutions from JPM Renewables.

Industries

Airports
Post & Parcel
Manufacturing
Process
Warehouse

From design to implementation
From execution to project management
From commissioning to maintenance

Our scope is not limited to our technologies and solutions, we can integrate in one project, other specialities, machines and technologies from partners.

The key is to offer a solution **from A to Z, from design to implementation, from execution, to project management, from commissioning to maintenance of all our customer plant.**

**WE ARE A
WORLDWIDE PLAYER
IN THE INTRALOGISTICS
MARKET**

**AND WE ARE CHALLENGED
EVERY SINGLE DAY
BY OUR CUSTOMER
AND PARTNERS.**

Follow us on LinkedIn

In order to be more and more close to the community, we are now present in LinkedIn. Here we will show our daily life and news.

Become part of our network and take a role in the history of the JPM Industry.

Follow us: JPM Industry



Subscribe our Youtube channel

Nowadays video plays a fundamental role in the digital presence of a company and as such JPM Industry takes on a vanguard role by having a YOUTUBE channel where **you can know inside our daily life, our products, the our solutions and on top of all our DNA.**

Follow us: JPM Industry

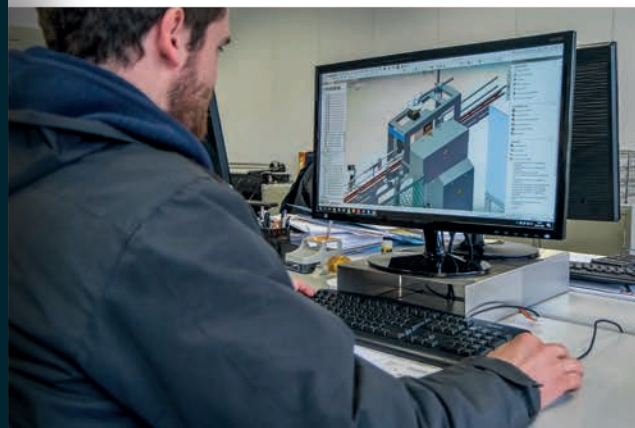


Come work with us

We offer integration in a dynamic and ambitious team that will help you to develop your career and fulfil your ambitions.

Join us and help us make the difference in the intralogistics market.

Check the openings in:
www.jpm.pt/careers



NEW:

www.jpm.pt



We are pleased to announce the launch of our new website!

Please visit our new website, focused on new features and contents, using media as the path to introduce our solutions and services.

We believe the videos and images will give you the right idea about who we are and what we do.

Please feel free to send any commentary or feedback about your experience with the website, email us to **marketing@jpm.pt**



Zona industrial do Rossio
Apartado 161
3731-901 VALE DE CAMBRA
PORTUGAL

(+351) 256 410 800
E-mail: jpm@jpm.pt

www.jpm.pt



Co financed by:

